

In advanced\* gastric/GEJ cancer,

# Testing for Claudin 18.2

with Immunohistochemical (IHC) staining may reveal candidates for targeted first-line treatment with VYLOY + chemotherapy<sup>1</sup>.

\*Locally advanced unresectable or metastatic.<sup>1</sup>

Claudin 18.2 (CLDN18.2) is a highly prevalent, predictive biomarker for advanced\* G/GEJ adenocarcinoma<sup>2-3</sup>

- Based on two global Phase 3 clinical trials, it is estimated that:

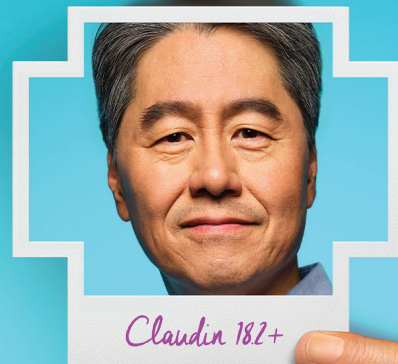
**38% OF PATIENTS** with advanced\* G/GEJ cancer are CLDN18.2+, which could make them candidates for VYLOY + chemotherapy<sup>2-3</sup>

The 2024 Pan-Asian adapted European Society for Medical Oncology (ESMO) Clinical Practice Guidelines highlighted CLDN18.2 as a validated predicted biomarker for metastatic or unresectable G/GEJ adenocarcinoma.<sup>4</sup>



## CLDN18.2

CLDN18.2 is the dominant isoform in normal gastric tissue and is often retained in malignant transformation.<sup>5</sup>



Scan to learn more  
about CLDN18.2

# Testing locations

Testing for CLDN18.2+ tumours is available at various labs throughout Singapore.<sup>†</sup> The following locations are ready to help identify patients with CLDN18.2+ tumours who may be candidates for treatment with VYLOY + chemotherapy.

## SGH Pathology Lab



College Rd, Level 7 Academia,  
THE Ngee Ann SHARE  
Discovery Tower, Singapore  
169856



6321 4900



[www.sgh.com.sg](http://www.sgh.com.sg)

## Angsana Molecular & Diagnostics Lab



67 Ubi Avenue 1, #06-06,  
Starhub Green North Wing  
Singapore 408942



6421 3868



[www.angsanalabs.com](http://www.angsanalabs.com)

## Parkway Lab



2 Aljunied Avenue 1 #07-11  
Framework 2 Building  
Singapore 389977



6278 9188



[www.parkwaylabs.com.sg](http://www.parkwaylabs.com.sg)

<sup>†</sup>This information is intended as informational and is not intended as a complete list of available testing options. Astellas is not responsible for any test provider and does not endorse any particular diagnostic test. The accuracy and results of diagnostic tests vary, and Astellas is unable to vouch for the accuracy of the lab's methods and tests and thus shall have no liability arising from such testing. Information provided herein should in no way be considered a guarantee of coverage, reimbursement, or patient assistance. Providers should contact third-party laboratories for information on their patient assistance programs. While diagnostic testing may assist providers in identifying appropriate treatment for patients, the decision and action should be decided by a provider in consultation with the patient. All products are trademarks of their respective holders, all rights reserved.

**Indication:** VYLOY™, in combination with fluoropyrimidine- and platinum-containing chemotherapy, is indicated for the first-line treatment of patients with locally advanced unresectable or metastatic human epidermal growth factor receptor 2 (HER2)-negative gastric or gastroesophageal junction (GEJ) adenocarcinoma whose tumors are Claudin (CLDN) 18.2 positive.

**References:** 1. VYLOY Singapore Approved Package Insert. 2. Shitara K, Lordick F, Bang YJ, et al. Zolbetuximab plus mFOLFOX6 in patients with CLDN18.2- positive, HER2-negative, untreated, locally advanced unresectable or metastatic gastric or gastro-oesophageal junction adenocarcinoma (SPOTLIGHT): a multicentre, randomised, double-blind, phase 3 trial. Lancet (Epub ahead of print) 04-14-2023. 3. Shah MA, Shitara K, Ajani JA, et al. Zolbetuximab plus CAPOX in CLDN18.2-positive gastric or gastroesophageal junction adenocarcinoma: the randomized, phase 3 GLOW trial. Nat Med 2023;29:2133-41. 4. Shitara K, Fleitas T, Kawakami H, et al. Pan-Asian adapted ESMO Clinical Practice Guidelines for the diagnosis, treatment and follow-up of patients with gastric cancer. ESMO Open. 2024;9(2):102226. doi:10.1016/j.esmoop.2023.102226. 5. Sahin U, Koslowski M, Dhaene K, et al. Claudin-18 splice variant 2 is a pan-cancer target suitable for therapeutic antibody development. Clin Cancer Res 2008;14(23):7624-34.



Report any adverse events to Astellas Pharma Singapore Pte. Ltd. at [pv@sg.astellas.com](mailto:pv@sg.astellas.com). Alternatively, adverse events may be reported to the Health Sciences Authority at Tel: 6866 1111, or online at <https://www.hsa.gov.sg/adverse-events>  
For healthcare professionals only. Photos used in this site include models, not actual patients.  
Astellas Pharma Singapore Pte. Ltd. 6 Temasek Boulevard, #26-03/05. Suntec Tower Four, Singapore 038986. Tel: 6500 9330 | [www.astellas.com](http://www.astellas.com) All rights reserved.  
MAT-SG-VYL-2025-00016 04/25  
VYLOY is a trademark and Astellas and the flying star logo are registered trademarks of Astellas Pharma Inc.



Scan for full VYLOY  
Singapore Package Insert